



City of Bellingham - Whatcom County Fire District #8 RFA Planning Committee

Issue Paper

Prepared by: Dave Pethick, Chief Bill Hewett

Date: 8-17-2017

Paper #: 1

Title:

Proposed RFA boundaries

Summary/Description of issue:

Identifying the proposed RFA jurisdictional boundaries.

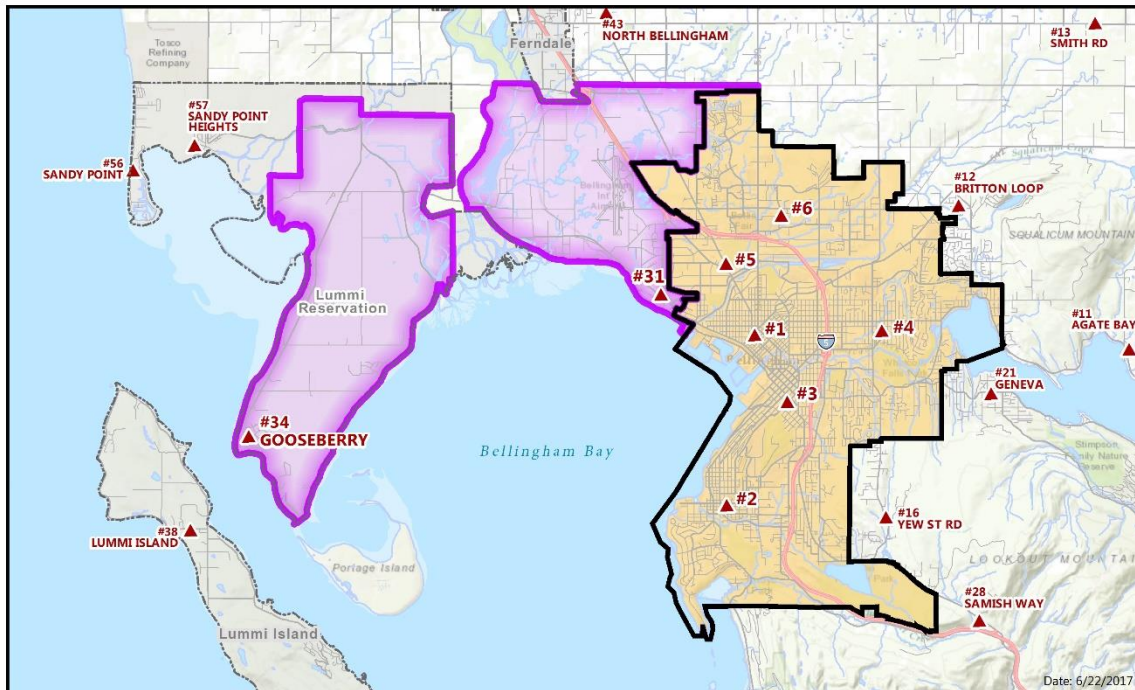
Options:

1. Jurisdictional boundaries of the RFA shall be the legal boundaries of the City of Bellingham and Whatcom County Fire District 8, "...whose boundaries are coextensive with two or more adjacent fire protection jurisdictions..." The boundaries are depicted on the map attached.
2. Adopt different jurisdictional boundaries for the RFA.

Staff Recommendations and Rationale:

Staff recommends adopting the map depicting jurisdictional boundaries that are the total combined and existing legal boundaries of the City of Bellingham and Whatcom County Fire District 8. This addresses the goals of the parties to provide unified fire and emergency services within the area and fits the legal requirements contained within RCW 52.26.

Direction from the Planning Committee:



Proposed Regional Fire Authority Boundaries



▲ Fire Stations

■ City of Bellingham

■ Fire District 8

